

IMI KNOEBEL

Painting Color Space

Curated by Giorgio Verzotti
7 October 2021 – 15 January 2022

Milano, Dep Art Gallery
www.depart.it



Imi Knoebel, Anima Mundi 106-3, 2019, 37x127x5,8 cm. Courtesy Dep Art Gallery, Milano

Milan, September 2021 - **Dep Art Gallery** is pleased to announce the exhibition "Painting Color Space" dedicated to **Imi Knoebel** (Dessau, 1940), one of the best-known artists devoted to minimalism and constructivism, which opens the gallery's new exhibition season from **October 7th 2021 to January 15th 2022**.

Curated by **Giorgio Verzotti**, the exhibition presents **27 works** created by the German painter from the late 1970s to the present - from the composition on paper *Messerschnitt VI* (1977) to the iconic *Anima Mundi 106-3* (2019) on aluminum - outlining the different moments of his visual research.

Internationally renowned for a minimalist approach to color and geometry, Imi Knoebel conduct research strictly focused on the expressive qualities of form, material, surface, and space. Giorgio Verzotti, who previously curated with Marco Meneguzzo the exhibition *Imi Knoebel. L'idea di Europa*, held at the PAC Padiglione d'Arte Contemporanea in Milan in 1991, writes in the critical text: "From the beginning, Imi Knoebel has posed the problem of the relationship between the work and space, and we Italians immediately think of Lucio Fontana's lesson, which in Germany was propagated also thanks to the relationship between the Italian master and the ZERO group. In fact, among Knoebel's declared references are Fontana, together with Yves Klein and Piero Manzoni, and therefore the field of the most radical abstraction, chosen and frequented since his days at the Academy in Düsseldorf,

together with his fellow artist Imi Giese, who died in 1974. They worked together, grateful to their professor Joseph Beuys for his encouragement, even though the German master said that his own research had little to do with theirs. They worked as self-taught, coming to art without really knowing what to do, says Knoebel today, but knowing well in which genealogy to place themselves".

The exhibition opens with the monumental work *LUEB go 1276w* (2013), an aluminum form whose borders are crisscrossed by yellow, blue and black strips. Representing the 1990s is a work from the *DIN II* series (1994), composed of four rectangular elements that follow each other in alternating primary colors, and the famous *Kinderstern* (1994), the children's star. Some examples of the editions entitled *Face* (2016) - in which bands of pure color are layered in an emotional and structural alternation - and the small *An Meine Grüne Seite* (2007) and *Tafel* (2016), which, like chromatic altarpieces, mark in a clear and linear way the perceptual poetics of the German master. Also characteristic of the artist are the works formed by compositions of many elements such as *Tag und Nacht III E1-E5* (1998) and *Nummer 9B-15B* (2012), where we witness the true manifestation of color as an individual element, similar to a splinter that emerges from the strict structural connotations, just to name a few. Representing the last decade are three works from the *Anima Mundi* series, so dear to the artist: color and minimalism, essence of form and power of the sign, constitute the interpretative cornerstones of Imi Knoebel's artistic practice.

A bilingual (Italian and English) catalogue with a critical text by Giorgio Verzotti accompanies the exhibition.

Biographical note

Imi Knoebel (born Klaus Wolf Knoebel)

Dessau 1940. Lives and works in Düsseldorf.

Imi Knoebel's works are held in major public collections including the Musée National d'Art Moderne, Paris; Dia:Beacon and Dia Art Foundation, New York; Bonnefantenmuseum, Maastricht; MMK, Frankfurt; Museu Coleção Berardo, Lisbon; The Broad, Los Angeles; MoMA, New York; MOCA, Los Angeles; Museo Reina Sofía, Madrid; Hamburger Bahnhof, Berlin; Norton Museum, West Palm Beach; and Sammlung Goetz, Munich.

Major exhibitions include: Dia Beacon, New York (2021 and 2008); Museum Haus Konstruktiv, Zurich, Switzerland (2018); Skulpturenpark Waldfrieden, Wuppertal, Germany (2017); Musée Fernand Léger, Biot, France (2016); Kunstmuseum Wolfsburg, Germany (2014); In 2011, Knoebel created six stained glass windows for Reims Cathedral in France in addition to exhibiting at the Museum der bildenden Künste, Leipzig, Germany (2011); Deutsche Guggenheim, Berlin, Germany (2009); Hamburger Kunsthalle, Germany (2004); Kestner Gesellschaft, Hannover, Germany (2002); Institut Valencià d'Art Modern, Valencia, Spain (1997); Kunstmuseum Luzern, Switzerland (1997); Haus der Kunst, Munich, Germany (1996); Stedelijk Museum, Amsterdam, Netherlands (1996 and 1972); Deichtorhallen, Hamburg, Germany (1992) Staatliche Kunsthalle Baden-Baden, Germany (1986); Imi Knoebel, Kunstmuseum Bonn, Germany (1983); Dia Art Foundation, Cologne, Germany (1981 and 1983); Städtische Kunsthalle Düsseldorf, Germany (1975);

Imi Knoebel has also participated in international exhibitions such as Documenta, Kassel (1972, 1977, 1982, 1987) and the 18th Bienal de Sao Paulo, Brazil.



Information

Imi Knoebel. Painting Color Space

Curated by Giorgio Verzotti

October 7, 2021 - January 15, 2022

Dep Art Gallery

Via Comelico 40, Milan

Tuesday - Saturday, 10.30 am - 7 pm

www.depart.it

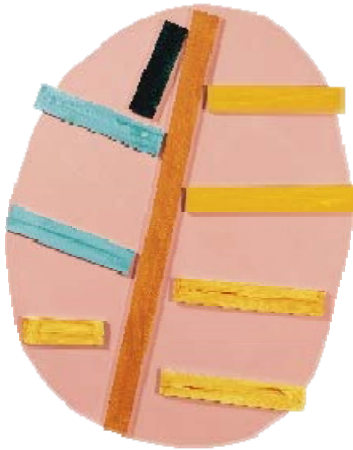
Press Office

ddlArts | T +39 02 8905.2365

Alessandra de Antonellis | E-mail: alessandra.deantonellis@ddlstudio.net | T +39 339 3637.388

Elisa Fusi | E-mail: elisa.fusi@ddlstudio.net | T +39 347 8086.566

IMI KNOEBEL - First floor



2013
LUEB Go 1276w
174x140x6.5 cm
Acrylic on aluminium



2019 Anima Mundi 106-3
37x127x5,8 cm Acrylic on aluminium



2012
Nummer 9B-15B
45,1x301,4x1 cm
Acrylic on aluminium



2016
Tafel DCCLXVII
19,6x14x3,5 cm
Acrylic on aluminium, wood



2006
Twin 4
144x99x6 cm
Acrylic, aluminium, plastic film



2018
Element 39.1
34,5x30,9x1 cm
Acrylic on aluminium



1983
Untitled
73,5x98 cm
Enamel on layered



1990
Zeichnung 2
103x74 cm
Reverse glass painting on plexiglass with lacquer



1977
Messerschnitt VI
100x70 cm
Acrylic on paper



1998
Tag und Nacht III E1-E5
16x100x3,5 cm
Acrylic on aluminium



1994
Kinderstern
38,5x43x9 cm
Acrylic on wood

IMI KNOEBEL - Basement floor



1994
DIN II A1-A4
36,7x132,5x8 cm
Acrylic on aluminum on wood



2007/ 2009
Fishing Red I E.
60x120 cm
Acrylic on paper strips, collaged



2016 Face 75 Ed.
36x36cm Acrylic
on plastic foil



2016 Face 87 Ed.
36x36cm Acrylic
on plastic foil



2016 Face 88 Ed.
36x36cm Acrylic
on plastic foil



2016 Tafel DCLXXIII
14,7x10,4x3,1 cm
Acrylic on aluminium, wood



2016 Tafel DCLXXXIX
14,7x10,4x3,1 cm
Acrylic on aluminium, wood